

Policy & Campaigns Committee Meeting 4 Agenda

Chair: Ben Whittle (BW) – SU President

Secretary: David Jones (DJ)

Committee Members: Ben Whittle (BW) – SU President; Luke Myer (LM) – VP Academic Representation; Dan Bocharnikov (DB) – VP Activities; Rosie McKenna (RM) – VP Welfare; Yotam Berant (YB) – BME Officer; Kathryn Pidcock (KP) – Disabled Students' Officer; Isabella Castaneda (IC) – International Students' Officer; Yasmin Lee (YL) – LGBT+ Officer; Dawn Chadwick (DC) – Mature & PT Students' Officer; Molly Houghton (MH) – Postgraduate Students' Officer; Bex Kinley (BK) – Trans and Non-Binary Students' Officer; Molly Smallwood (MS) – Women's Officer; Kathryn Murphy (KM) – Open Rep; Thomas Dodd (TD) – Open Rep.

20th February

Online meeting due to lack of mutually convenient time for committee members

Context

After failed attempts to find mutually agreeable time to hold standard PCC in February, BW decided to hold an online committee. Papers were circulated by DJ on 14th February 2018, with committee members instructed to vote on each agenda item, before submitting their responses to DJ by 19th February 2018. For clarity's sake, an excel spreadsheet was circulated along with the meeting papers, which were committee members were asked to complete indicating their voting preferences.

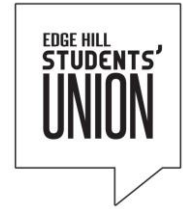
Replies received from: DB; LM; RM; YB; KP; IC; YL; DC; MH; MS; KM.

In the event of deadlock, BW would cast deciding vote. Unless otherwise stated, BW's vote is counted as an abstention.

Agenda

Actor	Item	Status/Action
DJ	Minutes from Previous Meeting	Approved Votes for: 9 Votes against: 1 Abstain: 2
BW	SU President Report	Approved Votes for: 11 Votes against: 0 Abstain: 1
LM	VP Academic Representation Report	Approved Votes for: 11 Votes against: 0 Abstain: 1
DB	VP Activities Report	No report submitted due to DB being on annual

		<p>leave. A number of committee members raised questions about the absence of an update.</p> <p>Action: DB to circulate update when he returns from annual leave.</p>
RM	VP Welfare Report	<p>Approved</p> <p>Votes for: 11 Votes against: 0 Abstain: 1</p>
BW	Policy: A Manchester Representative (See below)	<p>Approved</p> <p>Votes for: 10 Votes against: 0 Abstain: 2</p>
LM	Policy: The Delivery of Campaigns (See below)	<p>Approved</p> <p>Votes for: 11 Votes against: 0 Abstain: 1</p>
DJ	<p>Any Other Business</p> <p>LM noted that no record of active policy is currently held on EHSU website or circulated among members. This hinders continuity, handovers, and legacy projects. As such, LM proposed creating list of all active policy and including it as a standing item at future PCCs. The list would include lead officer responsible for policy and most recent actions associated with it.</p>	<p>Action: Live policy list to be created by DJ and LM. List to be circulated among committee members and put on EHSU website.</p>



A Manchester Representative

Ben Whittle, President

Remitted to: Policy & Campaigns Committee

Notes:

- *"You have done more for Manchester Campus in the last 5 months than the Students' Union has done in the last 4 years"* this goes to show that there is no continuity for Manchester Campus students.

- Manchester Campus is often forgotten about and this has been shown through email exchanges with myself and some students' over in Manchester Campus. For example one student said *"You [The Students' Union] only cares about us when they need our votes"*. This is upsetting to read that a portion of our membership, who are Edge Hill students, who we are representing, think that we do not do anything for them.

- There is currently a Faculty Rep for Manchester students who is responsible for representing their academic interests.

- There is a Student Council pending approval from the Board of Trustees, with the Manchester Representative having a reserved space (See the image below).

- David and I polled students from Manchester Campus and 90% said that they are in favour of this position.

Believes:

- That there should be a Manchester Representative to represent all aspects of the student experience at the Manchester campus, who is able to run campaigns and collect student views, having the same responsibilities and powers as a Part Time Officer.

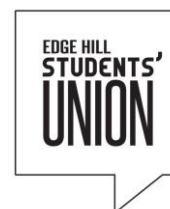
- That the Union should take responsibility for their lack of involvement in Manchester Campus and try to make a lasting commitment to address this issue.

- That the reserved student council position for Manchester students that is proposed is not good enough and shows that we do not take Manchester Campus students seriously.

Resolves:

- In order to make a bold statement as well as make sure that the relationship between the SU and Manchester is solidified for years to come a Manchester Representative position should be included in the March Elections this year.

- That they should have the same responsibilities as Part Time Officers, having the ability to run campaigns to make the student life better for those students in Manchester who we struggle to reach and provide for.



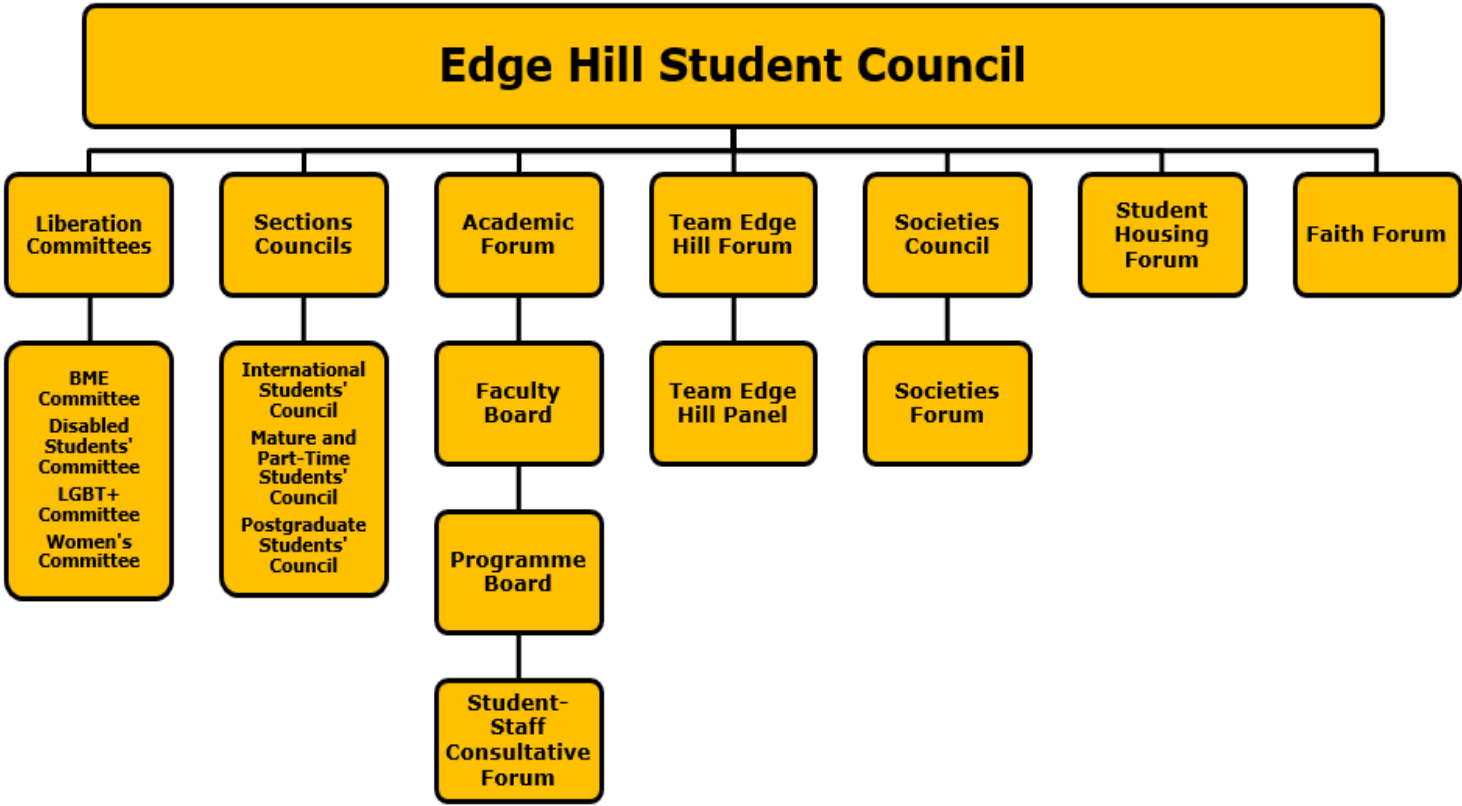
- That they will have a place on the Policy and Campaigns Committee and that they should also be an ex-officio member of Student Council, if it is approved.

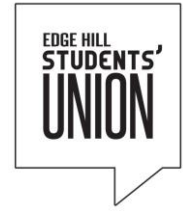
Student Council Membership

It is vital that Student Council is representative of the various groups of students we have at Edge Hill. While this list is not definitive, we propose that, in the first instance, Student Council consist of the following members:

Number	Category		
1	Student Council Chair		
1	Deputy Chair		
Ex-Officio Places			
Number	Category	Role	
4	Sabbatical Officers	SU President	
		VP Academic Representation	
		VP Activities	
		VP Welfare	
8	Part-Time Officers	Liberation Officers	BME Officer
			Disabled Students’ Officer
			LGBQ Officer
			Trans and Non-Binary Officer
			Women’s Officer
		Sections Officers	International Students’ Officer
			Mature and Part-Time Students’ Officer
			Postgraduate Students’ Officer
Reserved Places			
Number	Category	Role	Number
9	Academic Reps	Faculty of Arts and Sciences	3
		Faculty of Education	3
		Faculty of Health and Social Care	3
2	Team Edge Hill Representatives		
2	Societies Representatives		
3	Housing Representatives	Hall Rep	1
		Commuter Student Rep	1
		Off-Campus Rep	1
1	Student with Faith or Belief		
1	Student Parent or Carer		
1	Manchester Representative		
1	SU Student Staff Member		
Open Places			
Number	Category		
6	Open Representatives		

5	Casual Places
Total	45





The Delivery of Policy and Campaigns

Luke Myer, Vice President Academic Representation

Remitted to: Policy & Campaigns Committee

Notes:

- Democracy is a core value of our union, as outlined by our Strategic Plan - which also holds the KPI that 'elected student leadership [be] supported to be powerful impactful actors'.
- Research commissioned by the SU last year found that students were not clear on who elected officers were or what their role was; NUS recommended that the SU work to 'increase the awareness of who the elected officers are and what they do'.
- This year's Annual Members' Meeting passed policy to recommend that the Union's Marketing team 'devise specific strategies around promoting the visibility and work of elected officers'.

Believes

- That some SU campaigns in the past have been ineffective & not planned with clear outcomes in mind.
- That the Union now has an expanded staff resource for delivering on policy and campaigns.

Resolves

- That every policy or campaign the Union runs should begin with a democratic mandate - for either the idea, or the person proposing it.
- That once objectives are devised with this will of members in mind, planning should be innovative and evidence-led, involving as much staff expertise as possible.
- That while involvement in campaigns may include any staff, member, or external body, the ultimate responsibility for a campaign lies with the elected officer whose remit it falls under; they must sign-off on the plan, and be held accountable for its delivery & impact.